

SUZANNE KASLER



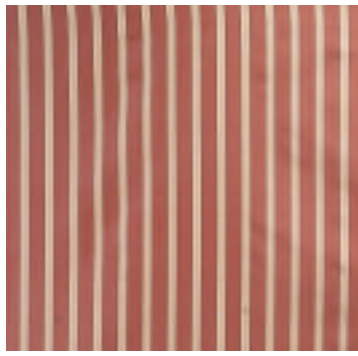
SINCE 1823

LEE JOFA

LEEJOFA.COM



MEURICE IN POPPY
2011132-19



ATELIER STRIPE IN RED
2011133-19



BRISTOL SILK IN CHARCOAL
2011135-21



COSTES IN POPPY/BLUE
2011126-195



CONCORDE IN INDIAN RED
2011128-19



REGINA IN TAUPE
2011125-611



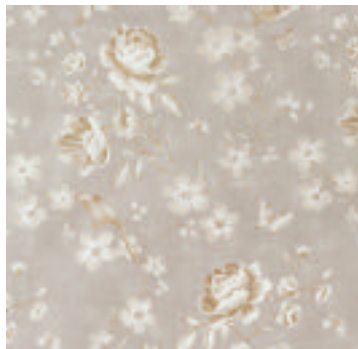
CRILLON LINEN IN DOVE
2011136-110



CASTILLE IN LINEN
2011137-11



MEURICE IN LINEN
2011132-111



RITZ IN PEBBLE
2011129-11



MEURICE IN WISTERIA
2011132-10



ATELIER STRIPE IN WISTERIA
2011133-10



BRISTOL SILK IN LAVENDER
2011135-10



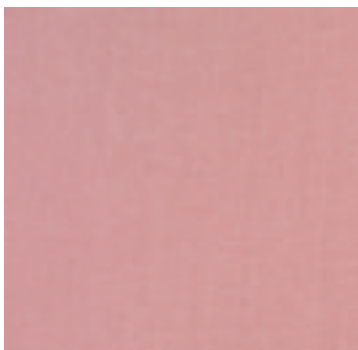
CRILLON LINEN IN BISCUIT
2011136-16



NORMANDY IN ROSE
2011127-167



MONTMARTRE IN PEARL/PINK
2011130-117



CRILLON LINEN IN QUARTZ
2011136-17



CASTILLE IN ROSE
2011137-7



BRISTOL SILK IN ROSE
2011135-7



REGINA IN PINK
2011125-7



COSTES IN AQUA/BLUE
2011126-135



CONCORDE IN LAPIS
2011128-53



ATELIER STRIPE IN BISCUIT
2011133-16



BRISTOL SILK IN SLATE
2011135-511



CRILLON LINEN IN FLINT
2011136-311



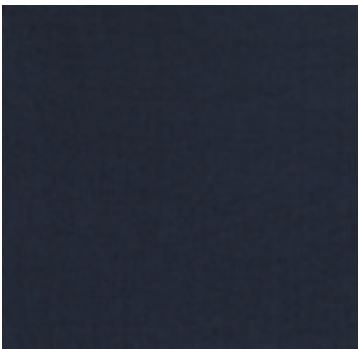
MEURICE IN MARINE
2011132-50



CASTILLE IN TOAST
2011137-16



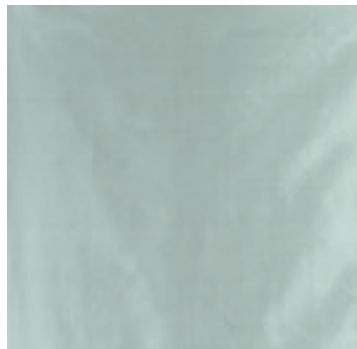
MONTMARTRE IN SKY/SAGE
2011130-315



CRILLON LINEN IN NAVY
2011136-50



NEW SHIRAZ IN INDIGO
2010155-50



BRISTOL SILK IN AQUA
2011135-13



CRILLON LINEN IN MIST
2011136-113



CASTILLE IN BISCUIT
2011137-1



ATELIER STRIPE IN AQUA
2011133-13



RITZ IN SKY
2011129-15



CONCORDE IN CURRY
2011128-44



REGINA IN CELERY
2011125-23



CRILLON LINEN IN KELP
2011136-23



BRISTOL SILK IN HERB
2011135-3



NORMANDY IN AQUAMARINE
2011127-115





My signature style is creating an inviting atmosphere by strengthening the architecture then layering with color, furniture and textiles. I have always loved textiles and find myself drawn to an array of tapestries, silks, linens and jacquards. When I travel and explore flea markets and antique shops, I purchase new and vintage fabric pieces to take home. Years of collecting inspired me to translate my design aesthetic into a fabric collection with Lee Jofa, which offers a fresh approach to classic pieces combined with a modern sensibility that is very much in keeping with my design philosophy.



For access to our digital library, please visit:
leejofoa.com/digitalibrary

LEE JOFA®

U.S. 800 453 3563 CANADA 800 535 3258 UK 44 (0)1202 266700 LEEJOFA.COM

Cover: Furniture: Prescott Chair - H4235-20, Fabric: Vendome Linen in Natural - 2011134-116, Trim: Bristol Silk in Oatmeal - 2011135-16; Pillows top to bottom: Costes in Grey/Orange - 2011126-128, Bristol Silk in Orange - 2011135-12, Atelier Stripe in Orange - 2011133-12; Drapery panel: Castille in Biscuit - 2011137-1, Trim: Crillon Linen in Orange - 2011136-12 **Back Cover:** Fabric: Marais in Fuchsia/Leaf - 2011138-734 **Page 3 and 4:** Drapery panel: Castille in Biscuit - 2011137-1, Trim: Crillon Linen in Orange - 2011136-12; Sofa: Heath Sofa - H4220-6, Fabric: Atelier Stripe in Orange - 2011133-12; Side pillows: Vendome Linen in Natural - 2011134-116, Trim: Bristol Silk in Orange - 2011135-12; Center pillows: Montmartre in Tan/Orange - 2011130-612, Trim: Perandor Small Cord (Flange) in Cream/Beige - TL10018-16; Left chair: Morgan Chair - H4250-20, Fabric: Crillon Linen in Natural - 2011136-116, Skirt Trim: Bristol Silk in Orange - 2011135-12; Pillow: Marais in Melon/Sand - 2011138-125, Trim: Just a Peek in Breakers - TL10110-2; Right chair: Prescott Chair - H4235-20, Fabric: Vendome Linen in Natural - 2011134-116, Trim: Bristol Silk in Oatmeal - 2011135-16; Tables: Lucille Shaped Leg Table - 9850, Orly Cocktail Table - Orly/48RE; Lamps: Plain Glass Urn in Nickel - TL95; Carpet: Lishan/C - Ivory